

VRS – Casa

The future of organic food waste



From waste to valuables

Data sheet

Power connection:
AC 230, L, N, PE, 50 Hz

Power consumption:
~ 0.43 kW / hour

Dimensions:
Length 300 mm
Width 590 mm
Height 700* - 820 mm

Capacity:
1 kg / hour

Duration:
2 – 3 hour / charge

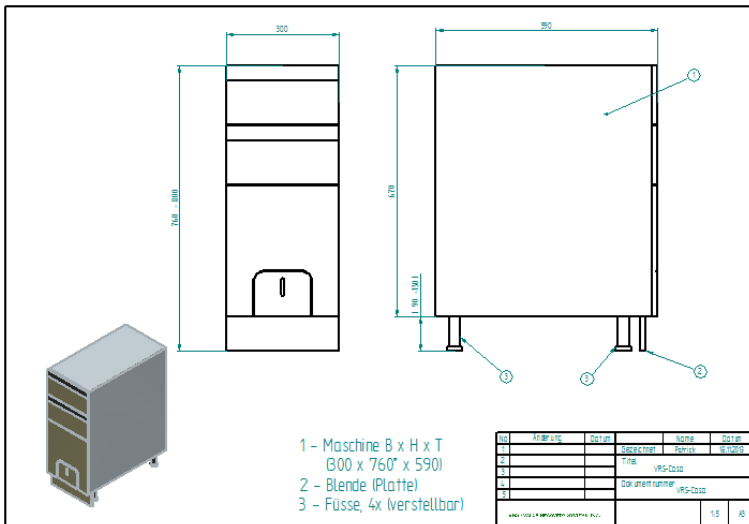
Reduction:
ca. 70 - 80%

VRS – Value Recovery Systems Inc.
Maihofstrasse 76
CH – 6006 Lucerne / Switzerland
Tel. +41 (0)41 618 08 20
Fax +41 (0)41 618 08 29
info@vrs-valuables.com



**For further information, please check our website:
www.vrs-valuables.com**

Dimensions and options



The fronts can be individually adapted to the kitchen.
The machine can also be installed behind a kitchen unit door..

How it works?



Open the loading door of the VRS – Casa.
Close the loading door.



Put the leftovers in the appropriate bowl.



Press "Start"



The result is an excellent organic fertilizer.

In perfect harmony with the nature!